



KX7 7 inch In-Wall Touchpanel

The extraordinary KX7 is packed full of features for complete control of entertainment, environment and security systems in any residential or commercial installation. The wall-mounted touchpanel has a slim profile, framing a vivid 7" LCD that can be custom tailored for intuitive control, while the multi-touch capacitive touchscreen allows screen swiping for page navigation. Meanwhile dealers will love the powerful capabilities at their disposal, such as the built-in RS-232 and infrared communication capability, allowing for direct control of electronics without a control processor. In addition, video inputs make it possible to view analog video at up to 576p, while an Ethernet connection enables even more functionality, such as viewing IP security cameras, surfing the web and advanced two-way control.

Additional Bezel Options



Black Bezel

Brushed Aluminum Bezel



Key Features

- Beautiful 7" 800x480 WVGA LCD with integrated multi-touch capacitive touch screen that allows screen swiping for page navigation.
- Composite, S-Video or Component video inputs allow viewing analog video at 480i/576i/480p/576p resolution.
- Integrated 10/100 Base-T (with PoE) and 802.11 wireless Ethernet.
- Built-in high output IR port for direct control of devices.
- Built-in RS-232 port for one-way control without a separate control processor.
- Powered using power supply, CB8 connecting block or PoE (Power over Ethernet).
- Optional modules/processors provide additional control capabilities including two-way communication via RS-232/IP, sensing, IR and relay control.
- USB and Ethernet Programming.
- Stylish low-profile faceplate available in white, black or brushed aluminum (ships with white).
- Integrated mounting wings for easy retrofit installations (metal back box also available separately).

Call 952-253-3100

www.rticorp.com



It's Under Control®

Specifications

| | |
|------------------------------------|--|
| Power..... | +9VDC to +16VDC, 1A max |
| Power Management..... | Adjustable backlight brightness/proximity sensor |
| Touchscreen Display..... | High-brightness color TFT LCD |
| | WVGA (800x480 pixels) with 65K colors |
| | Integrated high-resolution capacitive touchscreen |
| Display Size..... | 7.0 in (177mm) diagonal |
| Display Backlight..... | Dual CCFL, 300nit |
| Infrared Output..... | Through control port, 200mA output |
| | Drives up to 1000 ft (300 m) of wire |
| Ethernet Port..... | 10/100 Base-T with Power-over-Ethernet |
| Wireless Ethernet..... | 802.11b/g |
| Operating Temperature..... | +32°F to +122°F (0°C to +50°C) |
| Operating Humidity..... | 5% to 95% Non-condensing |
| Total System Memory..... | 128M Bytes Flash (non-volatile) memory |
| Device Capability..... | Total number of devices is limited only by memory |
| Macro Capability..... | Unlimited steps in a single macro |
| | Total number of macros is limited only by memory |
| | Macro capability on every button |
| Communications..... | USB programming port |
| Video Input..... | Three, BNC Connectors |
| | Composite, S-Video or Component Analog Video |
| | NTSC/PAL/SECAM |
| Enclosure..... | High-impact molded ABS plastic |
| Front Plate..... | High-impact molded ABS plastic |
| Mounting..... | Integrated mounting wings, or screws through front plate |
| Installation Cut-Out (W x H)..... | 7.7 in (195mm) x 5.6 in (143mm) |
| Outer Bezel Dimension (W x H)..... | 8.5 in (217mm) x 5.9 in (151mm) |
| Total Depth in Wall..... | 1.4 in (36mm), with video connector 2.1 in (53mm) |
| Weight..... | 1.4 lbs (634g) |
| Warranty..... | One Year (Parts & Labor) |

* All Specifications subject to change without notice.



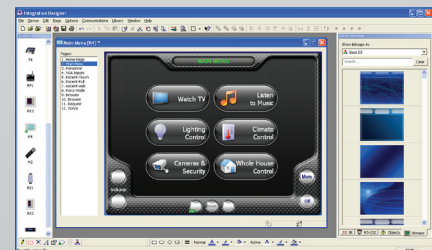
Accessories

| | |
|-------------|-------------------------------|
| XP-3 | Advanced Control Processor |
| XP-6 | Advanced Control Processor |
| XP-8s | Advanced Control Processor |
| CB-8 | Touchpanel Connecting Block |
| CM-232 | RS-232 Communication Module |
| CPB-1 | Control Port Connecting Block |
| ECB-5 | IR Connecting Block |
| ESC-2 | Ethernet Serial Converter |
| IPE-4 | IR Port Expander |
| PCM-4 | Port Control Module |
| RCM-4 | Ethernet Relay Module |
| vIRsa Mouse | IR Emitter |



Other RTI Products

| | |
|---------------|-------------------------------------|
| Virtual Panel | PC Software Interface (App) |
| RTiPanel | Mobile Software Interface (App) |
| SURFiR | Companion Remote Control |
| T1-B+ | Remote Control |
| T2-Cs+ | Remote Control |
| T2i | Remote Control |
| T2x | Remote Control |
| T3-V+ | Remote Control |
| RK1+ | 2-4-8 Button In-Wall Keypad |
| RKM-1+ | In-Wall Audio Distribution Keypad |
| KX2 | 2.8 inch In-Wall Touchpanel Keypad |
| RK3-V | 3.5 inch In-Wall Touchpanel Keypad |
| CX7 | Countertop/Under-Cabinet Touchpanel |
| RP-4 | RF Control Processor |
| AD-4x | Distributed Audio System |
| AD-8x | Distributed Audio System |
| RTiDock | Dock for Apple iPod® |
| CP-450 | 4 Channel Amplifier |
| CP-1650 | 16 Channel Amplifier |



Integration Designer® Programming Software

5775 12th Avenue East, Suite 180, Shakopee, MN 55379
 PH: (952) 253-3100 • Website: www.rticorp.com



It's Under Control®