



## Button Keycap Label Options

### Laser Shark® Button Keycaps



### Button Keycap Labels



NOTE: Wallplates sold separately.

## RK1+

### 2/4/8 Button In-Wall Keypad

Sized for a single gang electrical box, the RK1+ incorporates two, four or eight fully-programmable buttons. For seamless integration into any decor all RK1+ kits include white, black and light almond faceplates and keycap labels. For a high-end look and even more intuitive control experience, a certificate for one set of Laser Shark custom engraved keycaps is included, which allows text and graphics to be used. Expanded control capabilities, including two-way feedback (via the programmable button backlight color), are available when RTI control processors and accessories are used. The RK1+ even has a built-in IR control system for direct control of electronic systems,

## Key Features

- Two, four or eight assignable/programmable buttons.
- Ships with white, black and light almond faceplate/keycap kits.
- Ships with a certificate for one Laser Shark engraved keycap set - allows custom text and graphics to be used.
- Backlight color programmable on each button (16 colors available).
- Use any standard Decora® type wallplate.
- Master/slave configuration allows two keypads to work in conjunction.
- IR output port drives up to 1000 feet of wire.
- Completely customizable and programmable.
- Fits in a single gang electrical outlet box.
- Optional modules/processors for voltage sensing (to monitor power status of equipment) and two-way control.
- USB Programming.

Call 952-253-3100

[www.rticorp.com](http://www.rticorp.com)



It's Under Control®

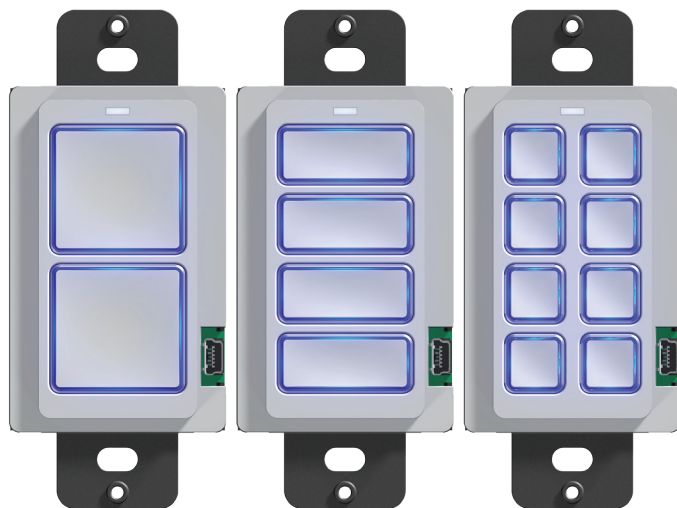
## Specifications

Power.....	+9VDC to +16VDC, 350mA max
Backlights .....	RGB LED - 16 color, user-definable
Infrared Output Port.....	200mA output
.....	Drives up to 1000 ft (300 m) of wire
Operating Temperature .....	+32°F to +122°F (0°C to +50°C)
Operating Humidity.....	5% to 95% Non-condensing
Total System Memory.....	64K Bytes Flash (non-volatile) memory
Device Capability.....	Total number of devices is limited only by memory
Macro Capability.....	Unlimited steps in a single macro
.....	Total number of macros is limited only by memory
.....	Macro capability on every button
Communications.....	USB programming port
Enclosure.....	Formed Steel, black powder coat
Front Plate .....	High-impact molded ABS plastic - White, metallic gray or black
Mounting.....	Mounts into single gang box
Front Plate Dimensions (H x W) .....	Purchased (Decora® Type)
Dimensions (H x W x D) .....	4.1 in (104mm) x 1.8 in (46mm) x 1.7 in (43mm)
Installation Cut-Out (H x W).....	2.8 in (71mm) x 1.8in (46mm)
Total Depth in Wall .....	1.37 in (34mm) Plus Cables
Weight .....	4 oz (284 g)
Warranty.....	One Year (Parts & Labor)

All specifications subject to change without notice

Decora® is a registered trademark of Leviton Manufacturing Co. Inc.

Wallplate not included.



The RK1+ button keycaps may be custom laser etched using the RTI Laser Shark service. In addition, each unit will include a certificate for one Laser Shark button order.



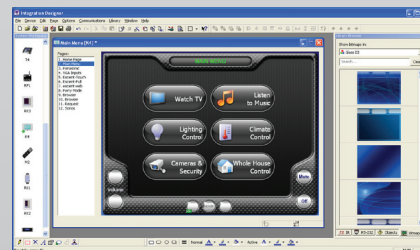
## Accessories

XP-3	Advanced Control Processor
XP-6	Advanced Control Processor
XP-8s	Advanced Control Processor
CB-8	Touchpanel Connecting Block
CM-232	RS-232 Communication Module
CPB-1	Control Port Connecting Block
ECB-5	IR Connecting Block
ESC-2	Ethernet Serial Converter
IPE-4	IR Port Expander
PCM-4	Port Control Module
RCM-4	Ethernet Relay Module
vIRsa Mouse	IR Emitter



## Other RTI Products

Virtual Panel	PC Software Interface (App)
RTiPanel	Mobile Software Interface (App)
SURFiR	Companion Remote Control
T1-B+	Remote Control
T2-Cs+	Remote Control
T2i	Remote Control
T2x	Remote Control
T3-V+	Remote Control
RKM-1+	In-Wall Audio Distribution Keypad
KX2	2.8 inch In-Wall Touchpanel Keypad
RK3-V	3.5 inch In-Wall Touchpanel Keypad
KX7	7 inch In-Wall Touchpanel
CX7	Countertop/Under-Cabinet Touchpanel
RP-4	RF Control Processor
AD-4x	Distributed Audio System
AD-8x	Distributed Audio System
RTiDock	Dock for Apple iPod®
CP-450	4 Channel Amplifier
CP-1650	16 Channel Amplifier



Integration Designer® Programming Software

