



Key Features

- Enables bi-directional Zigbee® communication.
- Wireless Zigbee® communication range between ZM-24 modules up to 100 feet.
- Connects to a central processor from up to 1000 feet away using standard Cat5 cable.
- Can be connected directly to compatible RTI control processors or create a self-healing mesh network by adding modules configured in “repeater” mode.
- Utilizes IEEE802.15.4 wireless Zigbee® communication at 2.4Ghz.
- Durable plastic enclosure and adjustable antenna.
- Receives power from an RTI control processor or from the included power supply.
- Easy mounting with a detachable wall bracket.

ZM-24 2.4GHz Transceiver Module

The ZM-24 transceiver module provides bi-directional communication between two-way enabled RTI remote controls and control processors utilizing Zigbee® wireless communication. Capable of being configured in two different modes, the ZM-24 can be hard-wired directly to a control processor or be used as a wireless repeater device to create an ultra-reliable, self-healing “mesh” network.

Description

Utilizing the latest in wireless technology, the ZM-24 2.4GHz Transceiver Module is capable of more than just receiving signals - it can transmit signals as well. This creates a bi-directional communication link between Zigbee® enabled RTI control processors and handheld remote controls. Feedback, such as song meta-data or volume level from supported devices can now be viewed on the remote control.

The ZM-24 is easy to install, since only one module needs to be hard-wired to the control processor. This device becomes the “coordinator”, while additional “repeater” modules can be added by simply powering them from any electrical outlet within communication range of other modules. The ZM-24 units will then create a self-healing “mesh” network which adapts to changes or problems with the communication path.

Call 952-253-3100

www.rticorp.com



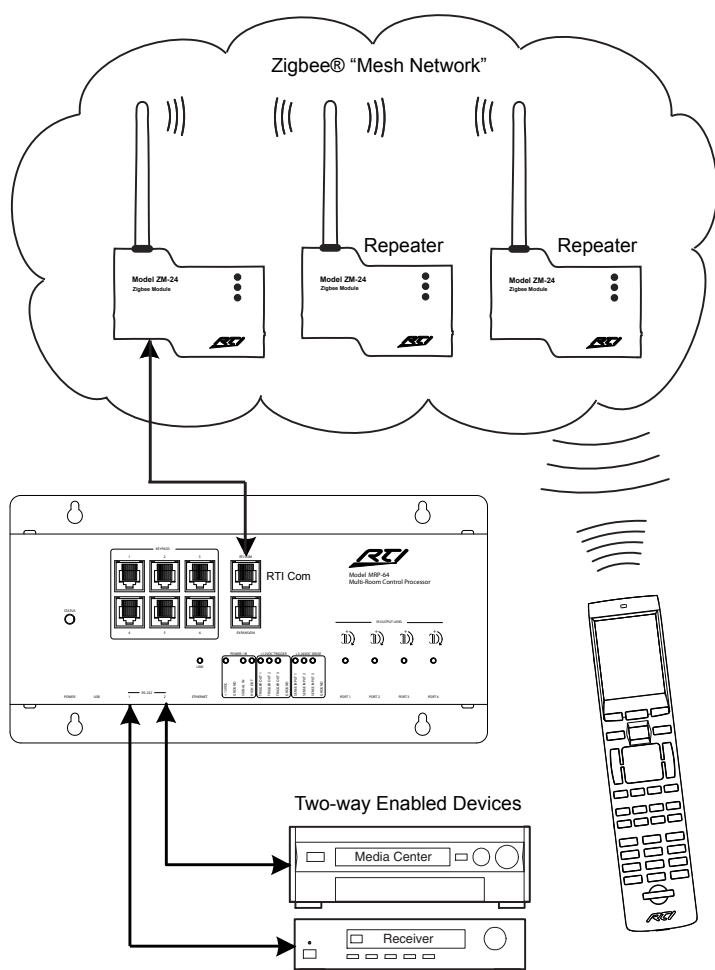
It's Under Control®

Specifications

Power.....+9VDC to +16VDC, 60mA
 RTI Com Port..... Two-way Zigbee® Communication Port, RJ45 Connection
 Drives up to 1000 ft (300 m) of wire
 Wireless Networking..... IEEE802.15.4 Zigbee® network compliant
 RF Frequency Range 2.4Ghz - 2.5Ghz
 Operating Temperature +32°F to +122°F (0°C to +50°C)
 Operating Humidity..... 5% to 95% Non-condensing
 Device Capability..... Total number of devices is limited only by memory
 Communications..... OTA (Over-the-air) Programmable
 Enclosure..... High-impact molded ABS plastic, black
 Mounting..... Detachable bracket
 Dimensions - Antenna Flat (WxHxD)..... 3.5" (89mm) x 4.0" (101mm) x 1.1" (28mm)
 Dimensions - Antenna Extend. (WxHxD).. 3.5" (89mm) x 7.25" (184mm) x 1.1" (28mm)
 Weight 4 oz (113g)
 Warranty One Year (Parts & Labor)

All specifications subject to change without notice

Installation Diagram



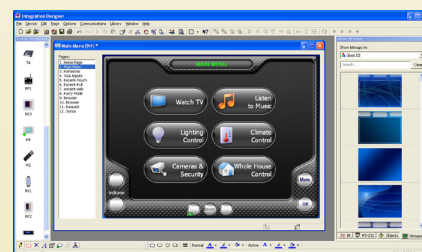
Control Systems

- ZRP-5 Remote Control Processor
- ZRP-6 Remote Control Processor
- MRP-64 Multi-Room Control Processor
- XP-8 Advanced Control Processor



Other RTI Products

- T1-B Universal System Controller
- M2 Universal System Controller
- T2-B Universal System Controller
- T2-Cs Universal System Controller
- T2-C Universal System Controller
- T3-V Universal System Controller
- T4 Universal System Controller
- U1 Weather Resistant Controller
- U2 Weather Resistant Controller
- RKM-1 In-Wall Multi-Room Audio Keypad
- RK1 In-Wall Keypad Controller
- RK2 In-Wall Touchscreen Controller
- RK3 In-Wall Touchscreen Controller
- K4 In-Wall Touchscreen Controller
- RM-433 RF Receiver
- RCM-12 Relay Control Module
- ECB-5 IR Emitter Connecting Block
- IR-PRO Infrared Capture System



Integration Designer® Programming Software

5775 12th Avenue East, Suite 180, Shakopee, MN 55379
 PH: (952) 253-3100 • Website: www.rticorp.com

RTI
 It's Under Control®